

POOL AREA

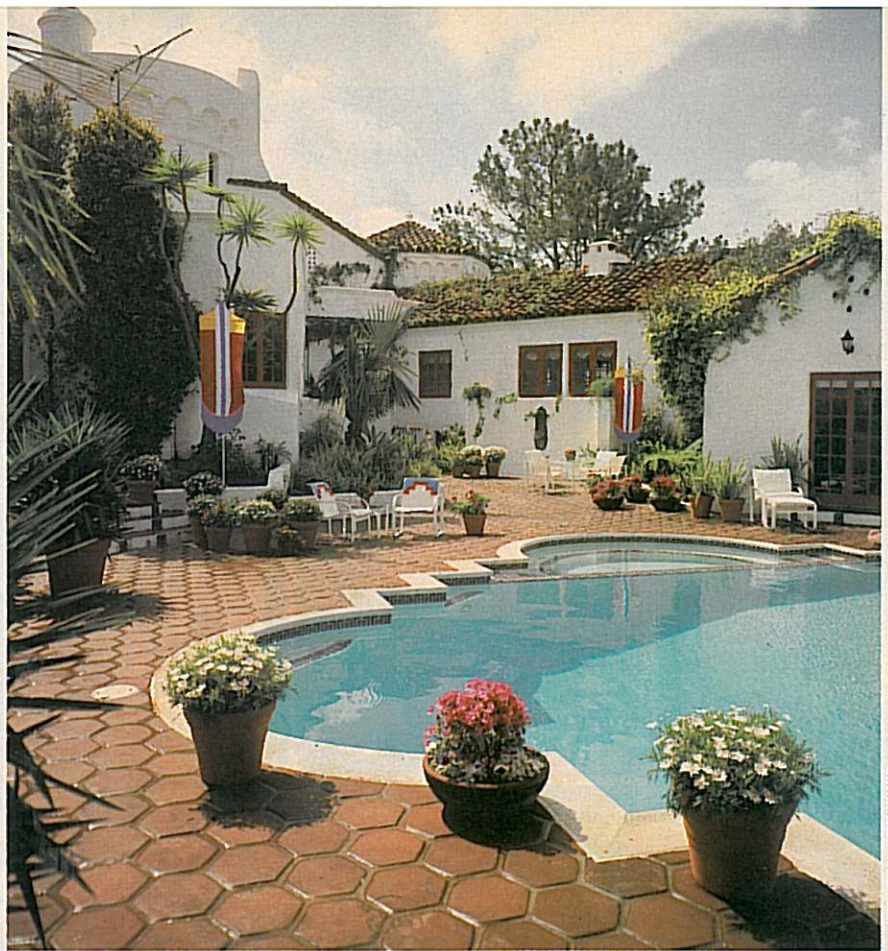
Tile, colorful plantings, and clean-lined outdoor furniture groupings enhance the Moorish design of the pool itself. Ailene Millar, ASID, has added banners and a tented pavilion (out of view) to create a heraldic theme

CANYON TERRACE

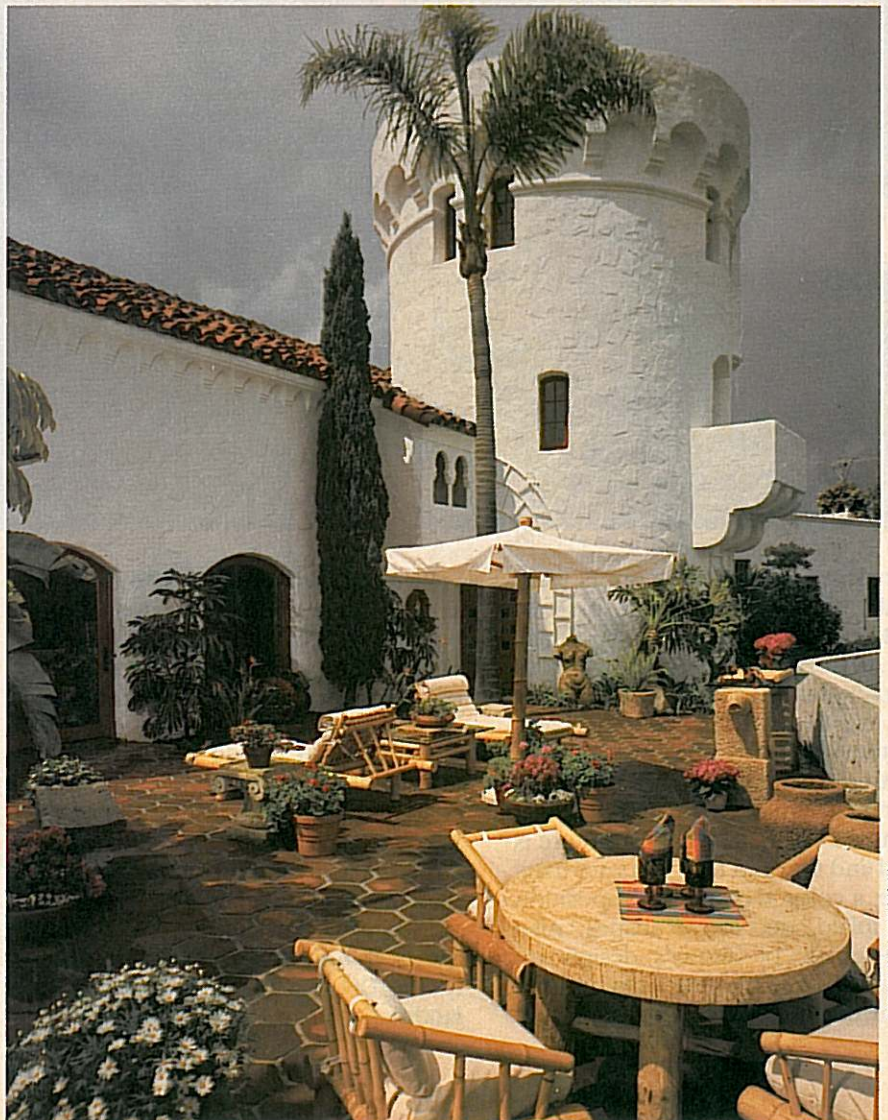
New tile, plantings, and bamboo patio furniture stand in stately array on the terrace in a design by Marsha Sewell, ASID, and Dolores Marquez, ASLA. An outdoor-lighting system gives the terrace drama as a sculpture garden at night

the great Spanish revival in California design, but the concept of a castle was a romantic idea of the Hardings themselves. Historically, Spanish castles were large houses fortified for protection, reflecting the grim realities of their time. Requa, however, was able to use the Spanish castle as a theme. He re-created some of its exterior appearance without bringing its harsh character inside, where his major concern was creating an environment adaptable to modern living. Consequently, the interior boasts an abundance of windows (including a couple of mammoth, arched picture windows) which would never be found in Spain. The interior is a fantasy, with touches combining Gothic and Moorish design common to the Spanish peninsula. But it is a fantasy adapted to satisfy the Hardings' ideals of castle life, while actually meeting the requirements of modern living. As one of Requa's colleagues, Architect Samuel Hamill, said recently: "Requa was creating something uniquely Southern Californian."

Though some of the hardware and



CHARLES SCHNEIDER



CHARLES SCHNEIDER